

Pisces Antiques Consignment Auction

AUCTION

Edens Auction Gallery

3720 Flowood Drive, Flowood, MS.



Saturday, March 7, 2009 - 10:00 a.m.

Our March consignment auction will be the best yet. Lots of Estate Jewelry, Roseville, Hull, Fenton, other fine glassware, and a good selection of furniture. There are over 10 consignors who say Must Sell! Be sure to attend the auction preview. Absentee and phone bids available.



Auction Date:

March 7, 2009 - 10:00 a.m.

Preview Dates:

--Sunday, March 1, 1:30 p.m. - 5:00 p.m.

--Monday - Friday, March 2 through 6
9:00 a.m. - 5:00 p.m.

Many items will be sold by Powerpoint presentation.
Please attend a preview.

Online bidding available on PROXIBID.COM

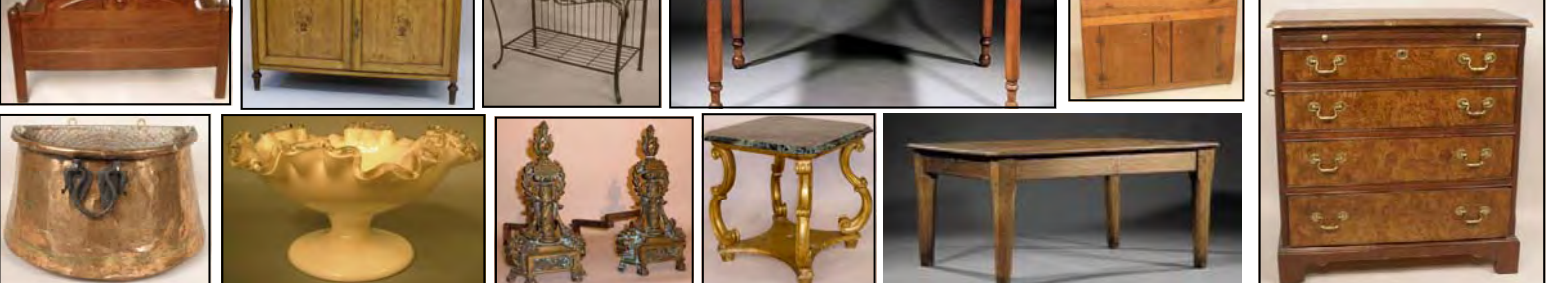


AUCTIONS, INC.

Visit <http://www.EdensAuctions.com>

Edens Auctions, Inc.
3720 Flowood Drive
Flowood, MS 39232
601-946-1501

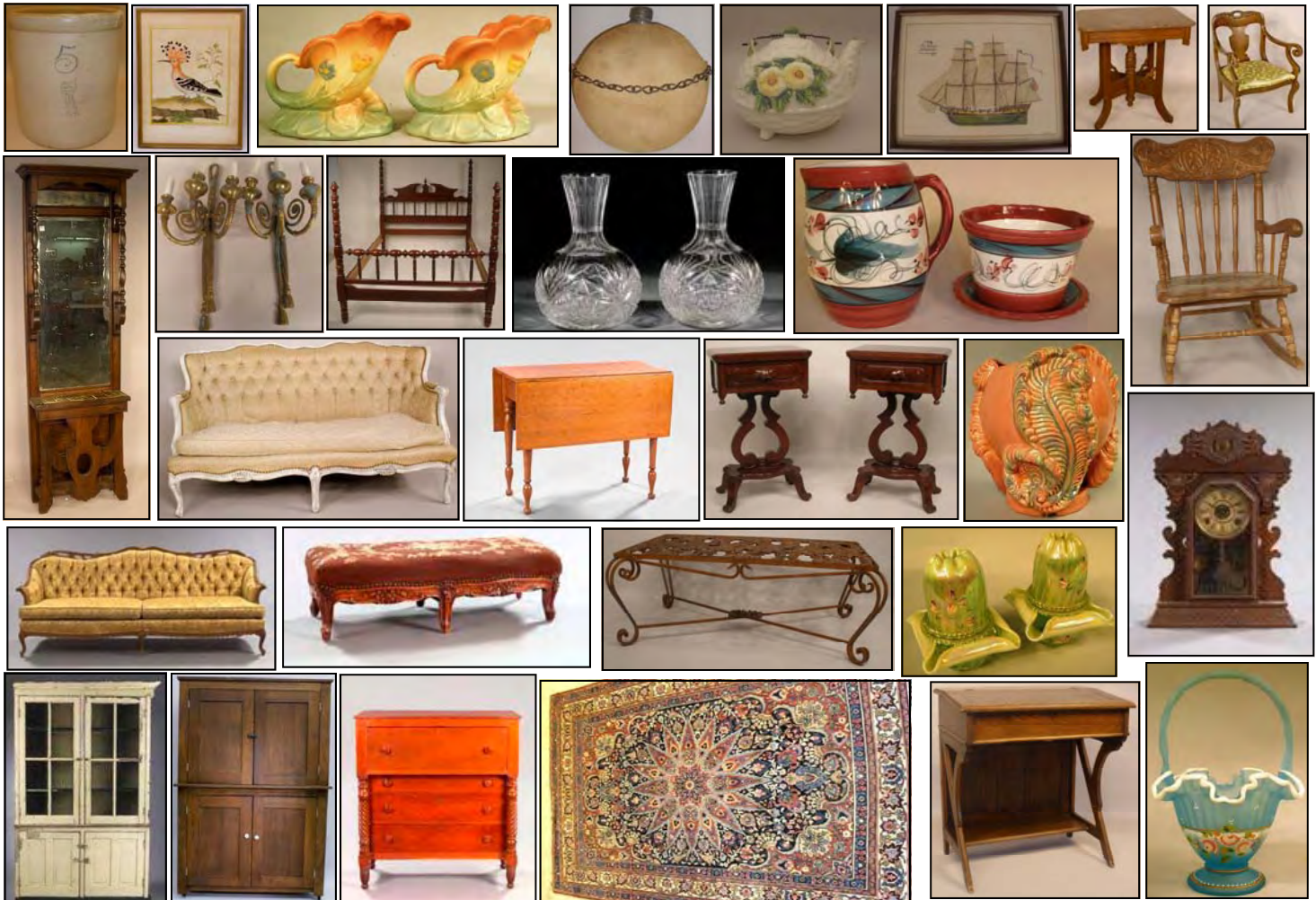
Frank D. Edens, Justin D. Edens
and Beau D. Edens, Auctioneers
frank.edens@edensauctions.com
License #206



Many items not available for listing or photo at time of printing. View online as items are added.

Partial Listing: Rare Carnival Glass Bowl, Roseville, Collection of Hull, Collection of Fenton, Cavalry French Chairs, Royal Copenhagen Porcelain Sculpin, Wildlife Scene Rubbing, Jean-Pierre Tertre Lithograph, Unique Wood Filing Cabinet, Iron Scales, Mantel clock, Francois Nicholas Martinet Bird Print, Egyptian Scene Oil on Canvas, Pen and Ink of Owl India Ink by Robert Mayokok, Countryside Watercolor, Pair of Eastlake Chairs, Several Nice Wardrobes, Hall Tree, Marble top tables, 5 oak press back dinning chairs, Set of 6 Walnut Chairs, Walnut Carved Sofa, Pair of Victorian Loveseats, Cocks, Walnut Kitchen Cupboard, Marble top dresser with mirror, French Twin Beds, Civil War Powder Flask, Civil War Confederate Water Flask, Civil War Bayonet, Wrought Iron Garden Table Set, Walnut Eastlake Writing Desk with Leather Top, Beautiful Louis XV French Bed, Pine Mantle, Copper planter, Mahogany Full Four Poster Bed, Needle Point Footstool, Iron Bakers Rack, Brass Compass, Ben Hogan 1953 3 wood and 5 wood, High chair, S.L. DuPont lighter, Bronze Wall Sconces, Victorian Bed, Andirons, French Marble Top End Table, Czechoslovakian Decanter with Cups, Mississippi Artist, Gail Pittman Flower Pot, Candelabra Made From Ice Tongs, Cylinder Roll desk, Fire Screen (iron), Primitive Cabinet, Glass top iron table and Chairs, Fern Stand, Copper Bar stools, Cast Iron Claw Foot Tub, Pair of French Armchairs, Chippendale Camel Back Sofa, Floor Lamp with Shade Mahogany Game Table, Set of 4 Heppelwhite Chairs, Oak Library Table, 1950 Painted Pie Safe, Antique Organ, Large Primitive Cabinet, Pair of Bronze Wall Sconces of Rococo Design, Mahogany Full Size Bed, Cut Glass Pitcher, Pair of Cut Glass Water Bottles, Kitchen Clock Matching Sofa and Chair, Oak Sideboard, Fly catcher, Bronze lion lamp, Iron Cross, Plate Rack, Fine Mahogany Secretary, 4 Oak Stack Bookcase, Gothic Walnut Washstand, Lamps, Oak Dining Table, Grandfather Clock, Two Iron Rockers, Oriental Rugs, High back Victorian chair, Metal Toy Trucks, Crosscut Saw, Small Yoke, Collection of Scales and much more.

Estate Jewelry Partial Listing: 7.18 ct. Total Weight Ladies Platinum & Diamond Ring , 3.57 Carats Ladies Solitaire, Greek Key Design Bracelet, 14K Gold Ring Heart Shaped Inlay Topaz, Ladies Diamond Bracelet, Ivory Bracelet, 1924 Gold Coin Pendant, Gold Heart Drop, Diamond Broach, Heart Drop, Ladies Topaz Broach, Antique Draw String Evening Bag, 14k Gold Ring, Gold Drop, Eagle Bird Pin, Gold Coin Drop, Gold Heart Bracelet, Diamond Tennis Bracelet, Sterling Drop with Beautiful Cameo, White Gold Diamond Hoops, Sterling Pendant, Mother of Pearl Pill Box, 3 Strand Pearl Necklace, Ladies Diamond Ring, One pair of South Sea Cultured Pearls & Diamond Earrings, Carved Silver Plate Bracelet, Cameo Pin & Earrings, One Drop Style White & Black Freshwater Pearl & Diamond Pendant, Sterling Marcasite, 14KT Victorian Diamond Earrings, 1880 1.9KT, Hinged Bangle w/ Stone, Victorian Diamond Bangle Bracelet, Miniam Haskell Necklace and Clip on Bolis, 14K Gold Beads, 14K Gold Chain, Victorian Diamond Pearl Earrings, Ladies Antique Estate Elgin Watch, Sterling Earrings, 4 Diamond Rope Estate Clip Earring, Yellow Gold Triple Row, Triple Link Chain Bracelet, Sterling Necklace, Sterling Buckle, Gold Ruby Earrings, Marcasite Necklace, Sterling Pin & Buckle, 10 Strand Gold Mesh Necklace, Sterling Silver Earrings, Pair of Gold Hoop Earrings and MUCH MORE.



Live Bidding available on Proxibid.com for cataloged items.

****Visit EdensAuctions.com for catalog and photos** ****PLEASE ATTEND OUR PREVIEW******

*****Many Items will be sold by Powerpoint Presentation*** **Phone and Absentee Bids Accepted****

Terms: Cash, Good Check, Visa, Mastercard, Discover, American Express.

12% Buyers Premium.



Directions:

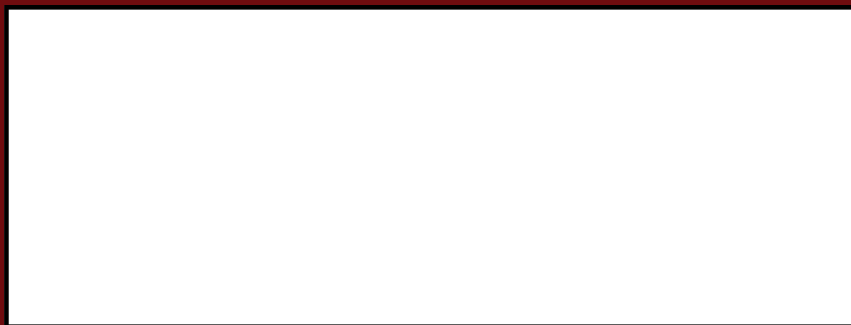
From Memphis: Take I-55 to Lakeland Drive exit in Jackson. After taking exit turn left onto Lakeland Drive. Go approximately 5 miles and take a left on Old Fannin Road, go 1/2 mile to red light (Bank of Forrest is on the left). Take a left at the red light onto Flowood Drive. Edens Auction Gallery is less than one mile on the left.

From New Orleans: Take I-10 W to I-55 and travel to Jackson, MS. Merge onto I-20 toward Meridian then take I-55 toward Memphis. Take Carthage Lakeland Drive exit in Jackson onto Lakeland Drive. Go approximately 5 miles and take a left on Old Fannin Road, go 1/2 mile to red light (Bank of Forrest is on the left). Take a left at the red light on Flowood Drive. Edens Auction Gallery is less than one mile on the left.

Be sure to attend the Auction Previews at our Gallery:
YOU NEED TO SEE THE ESTATE JEWELRY IN PERSON BEFORE THE AUCTION!!!!
Sunday, March 1 1:30 p.m. - 5:00 p.m.
AND
Monday through Friday, March 2 - 6 9:00 a.m - 6:00 p.m.



View Catalog Online at <http://www.edensauctions.com>



Edens Auctions, Inc.
 3720 Flowood Drive
 Flowood, MS 39232

PRST FIRST CLASS
 U.S. POSTAGE PAID
 JACKSON, MS
 PERMIT NO. 383

